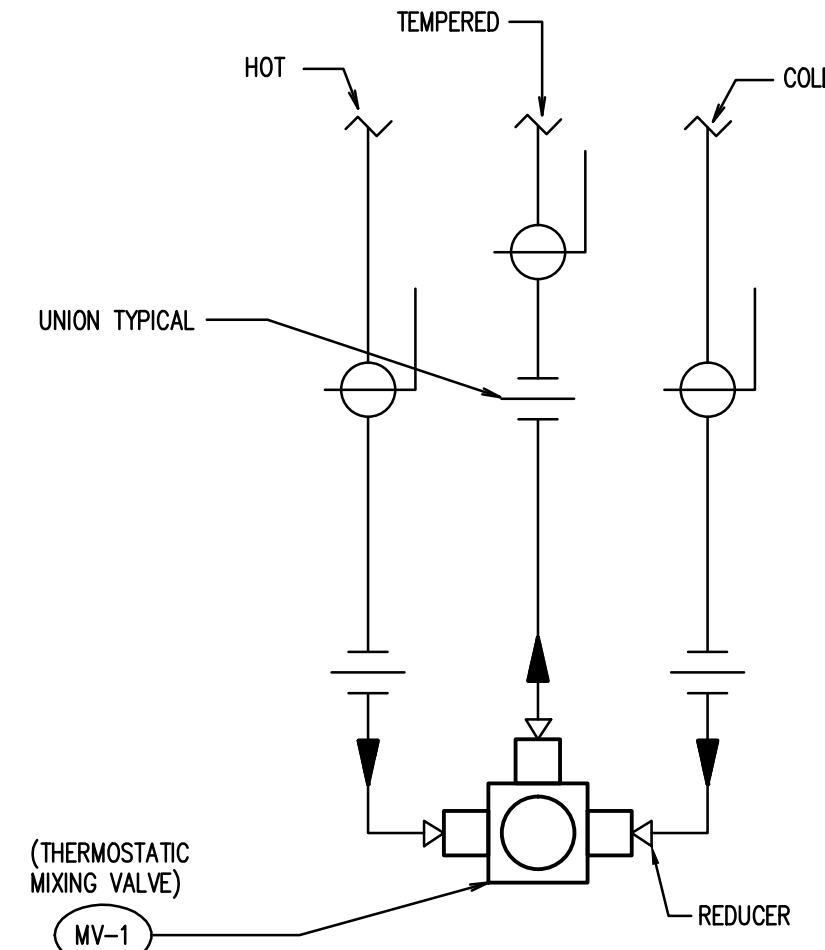
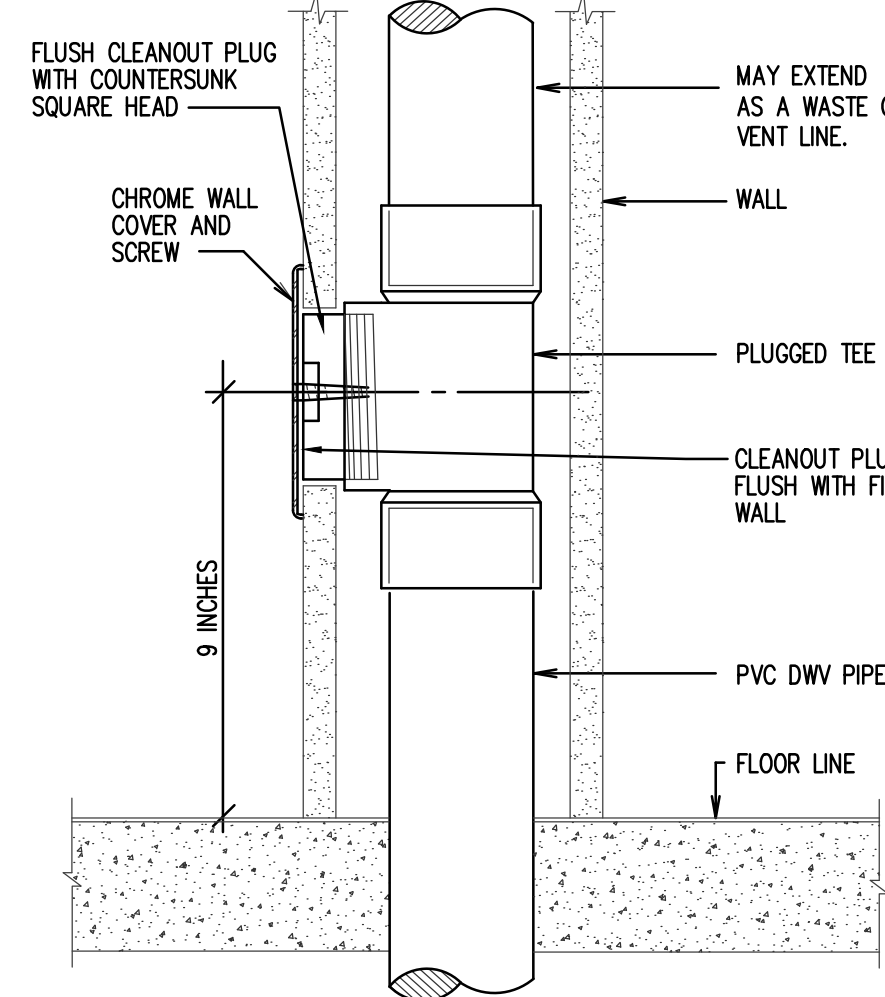


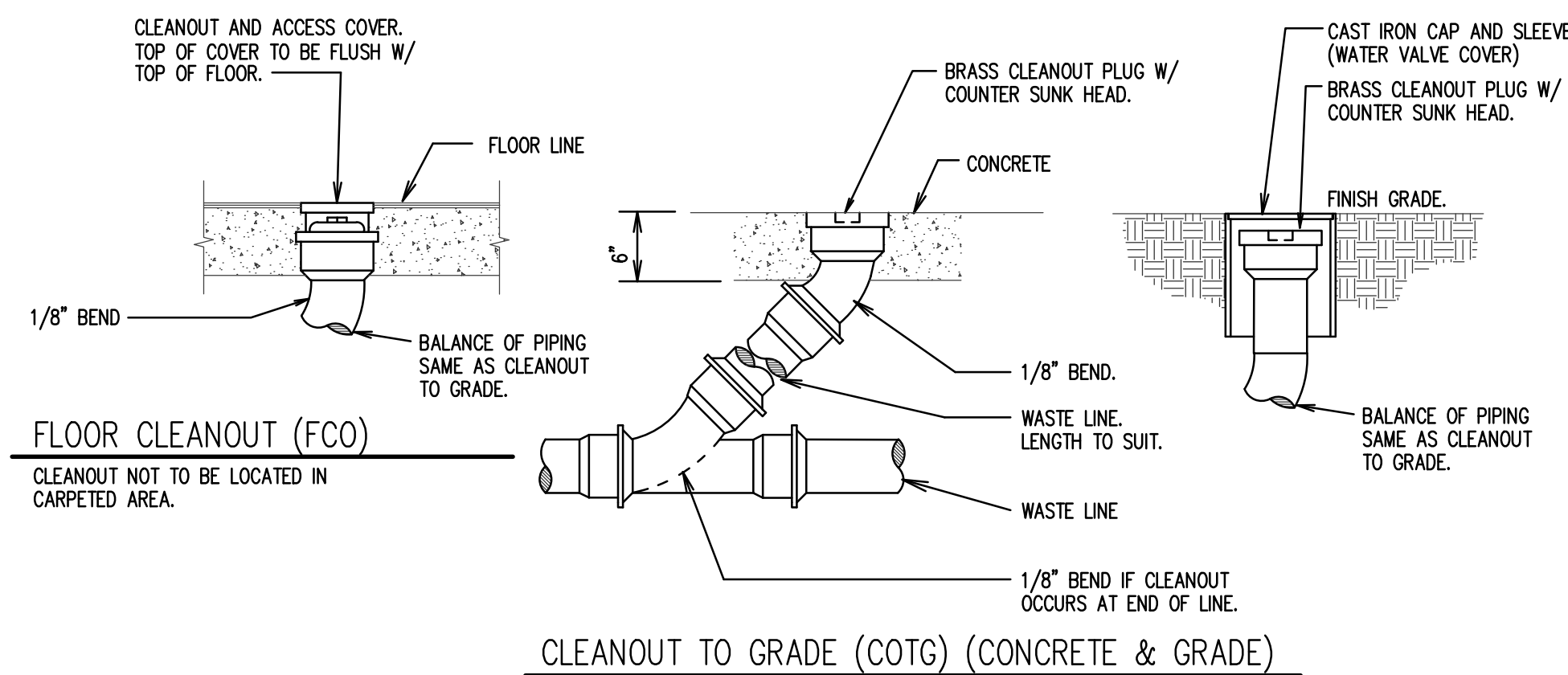
(B) VERTICAL WATER PRESSURE REDUCING STATION DETAIL
SCALE: NONE



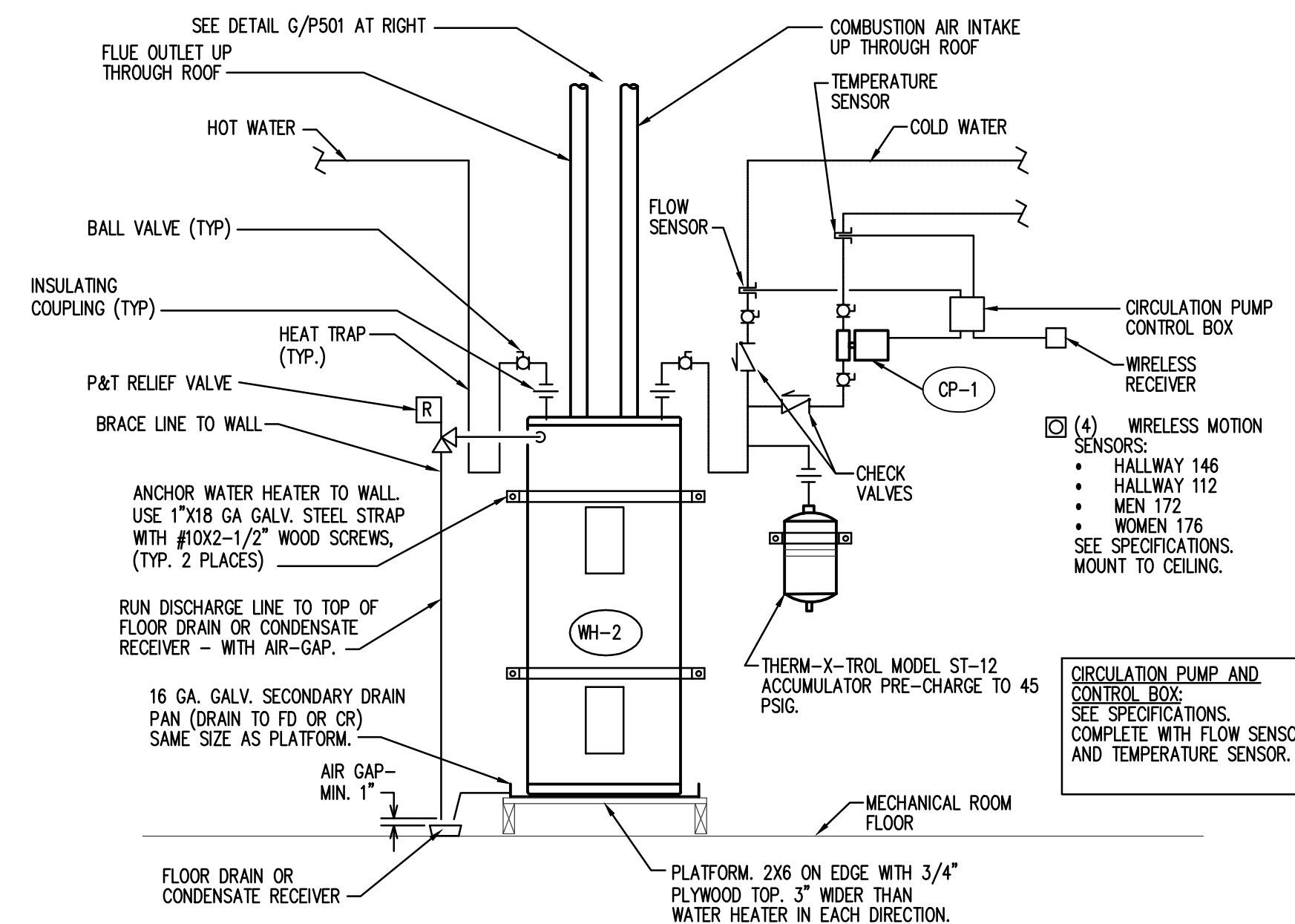
(C) MIXING VALVE PIPING SCHEME
SCALE: NONE



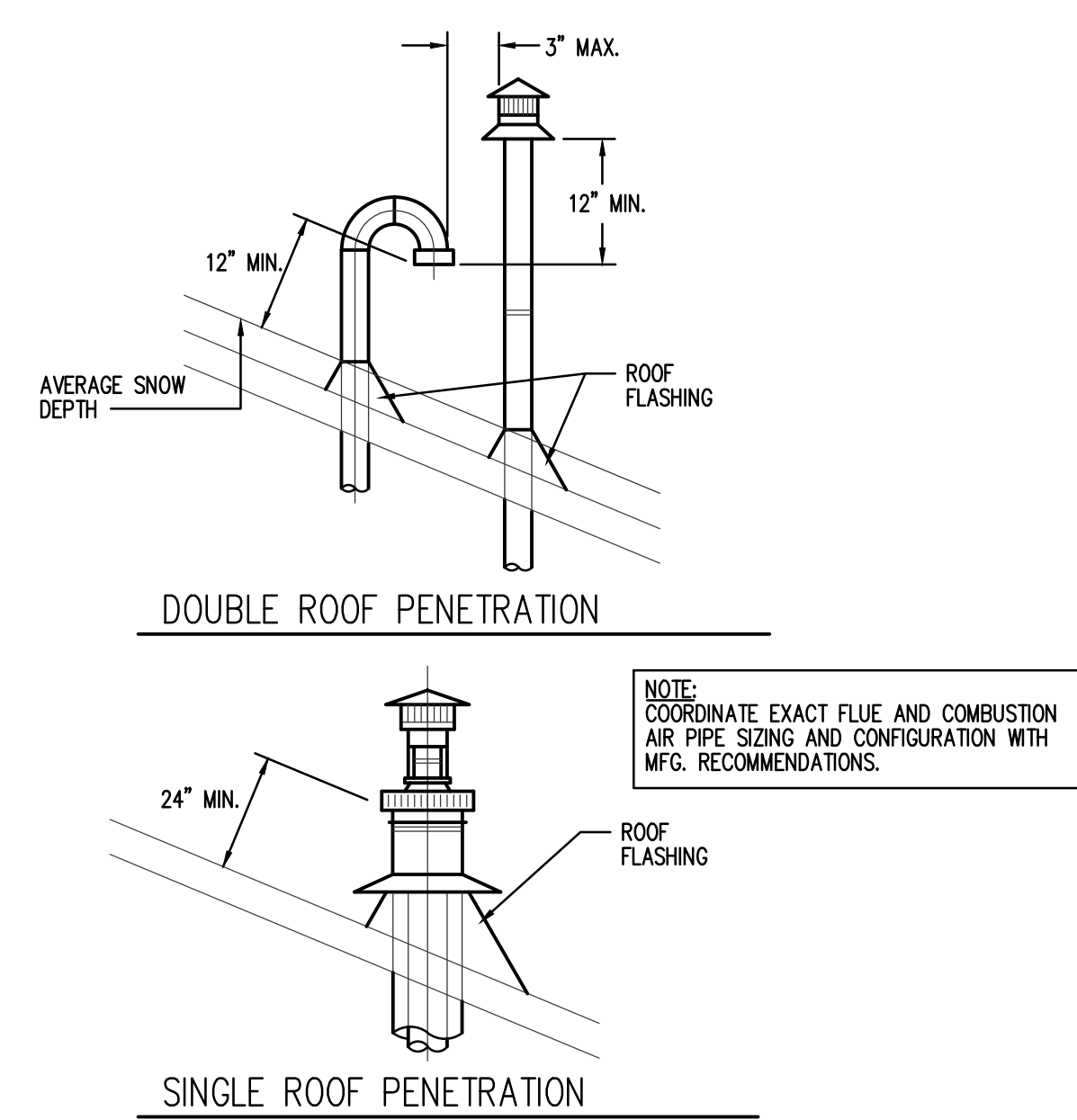
(D) WALL CLEANOUT DETAIL
SCALE: NONE



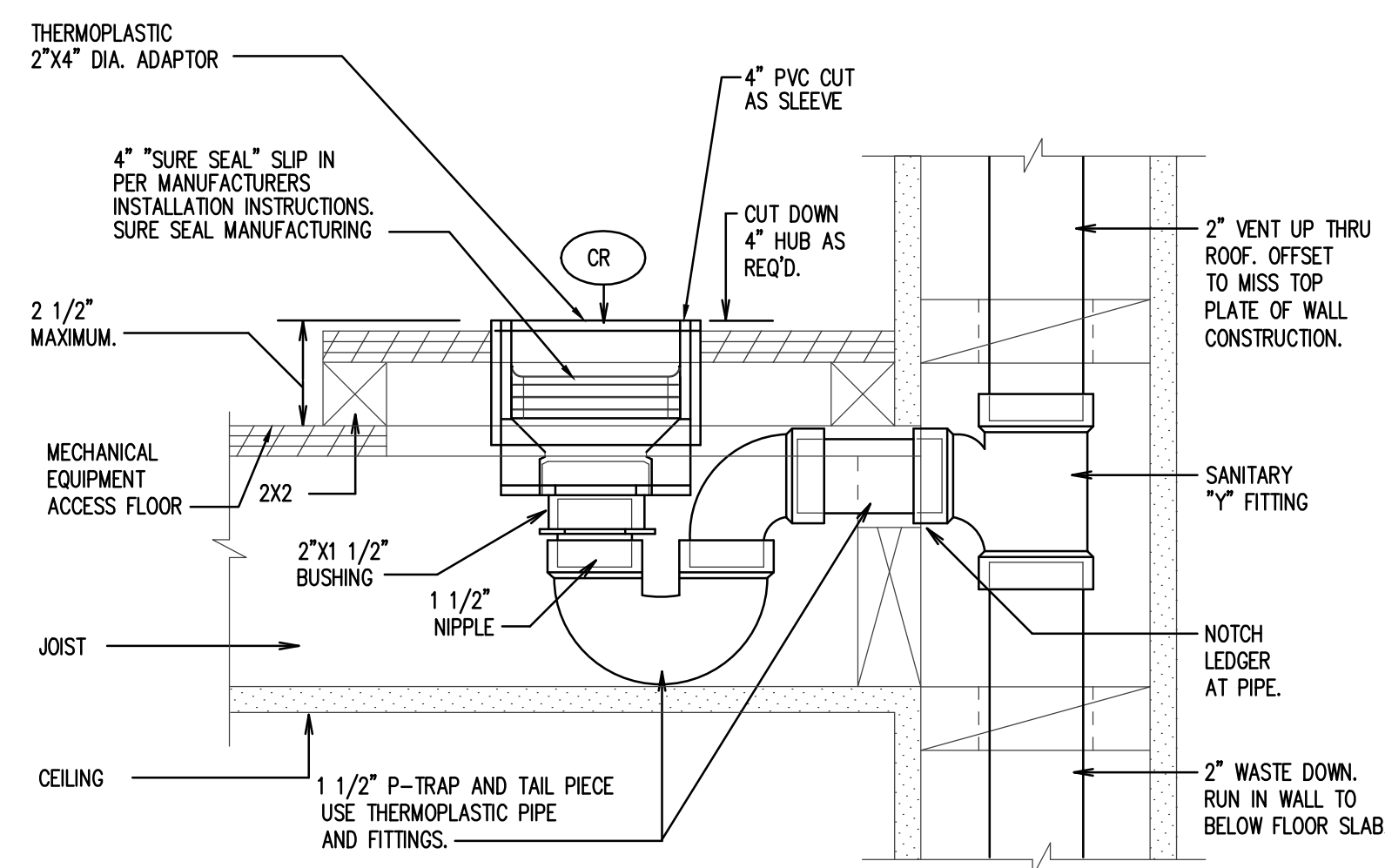
(E) CLEANOUT DETAILS
SCALE: NONE



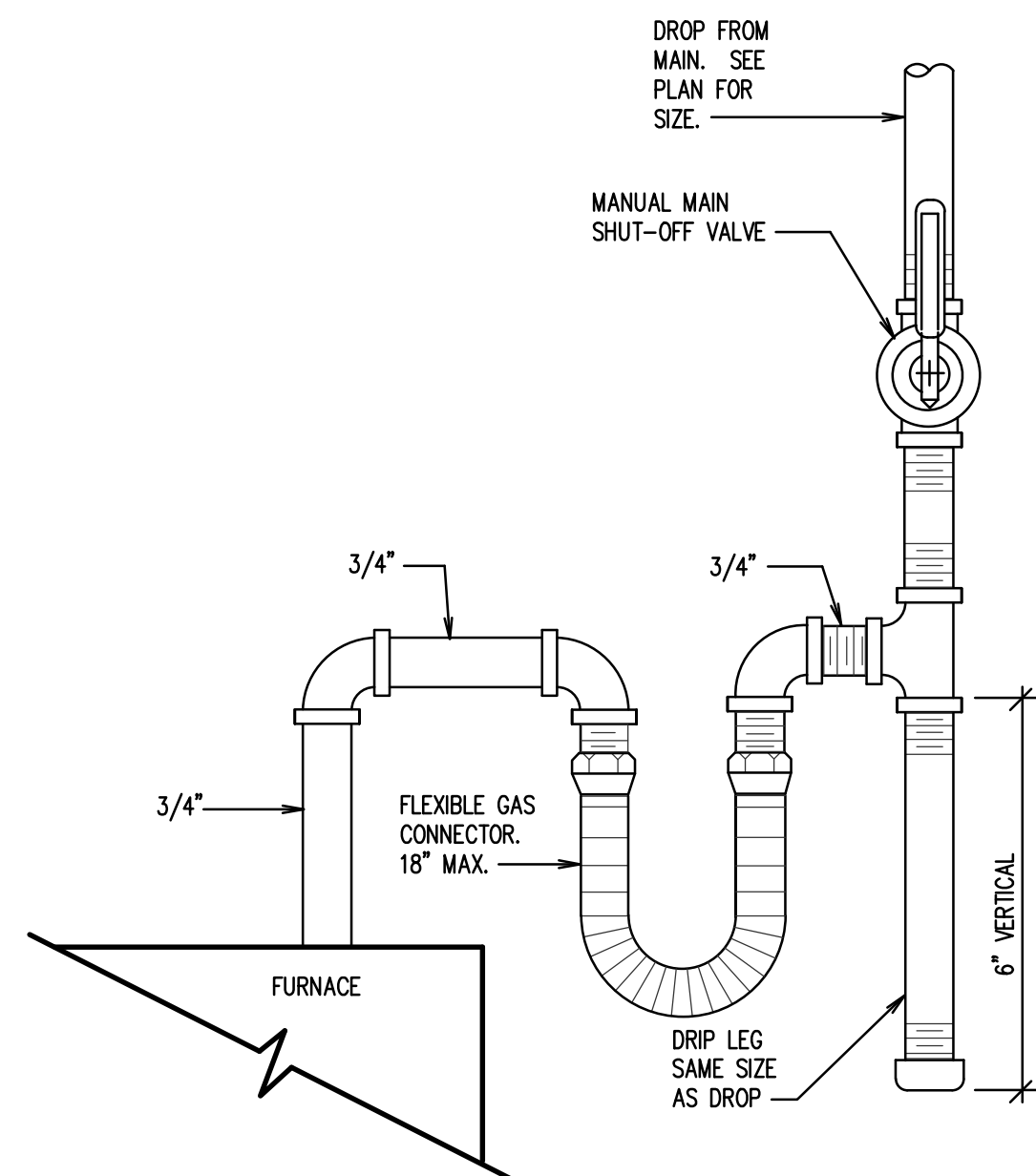
(F) TANK WATER HEATER PIPING DETAIL
SCALE: NONE



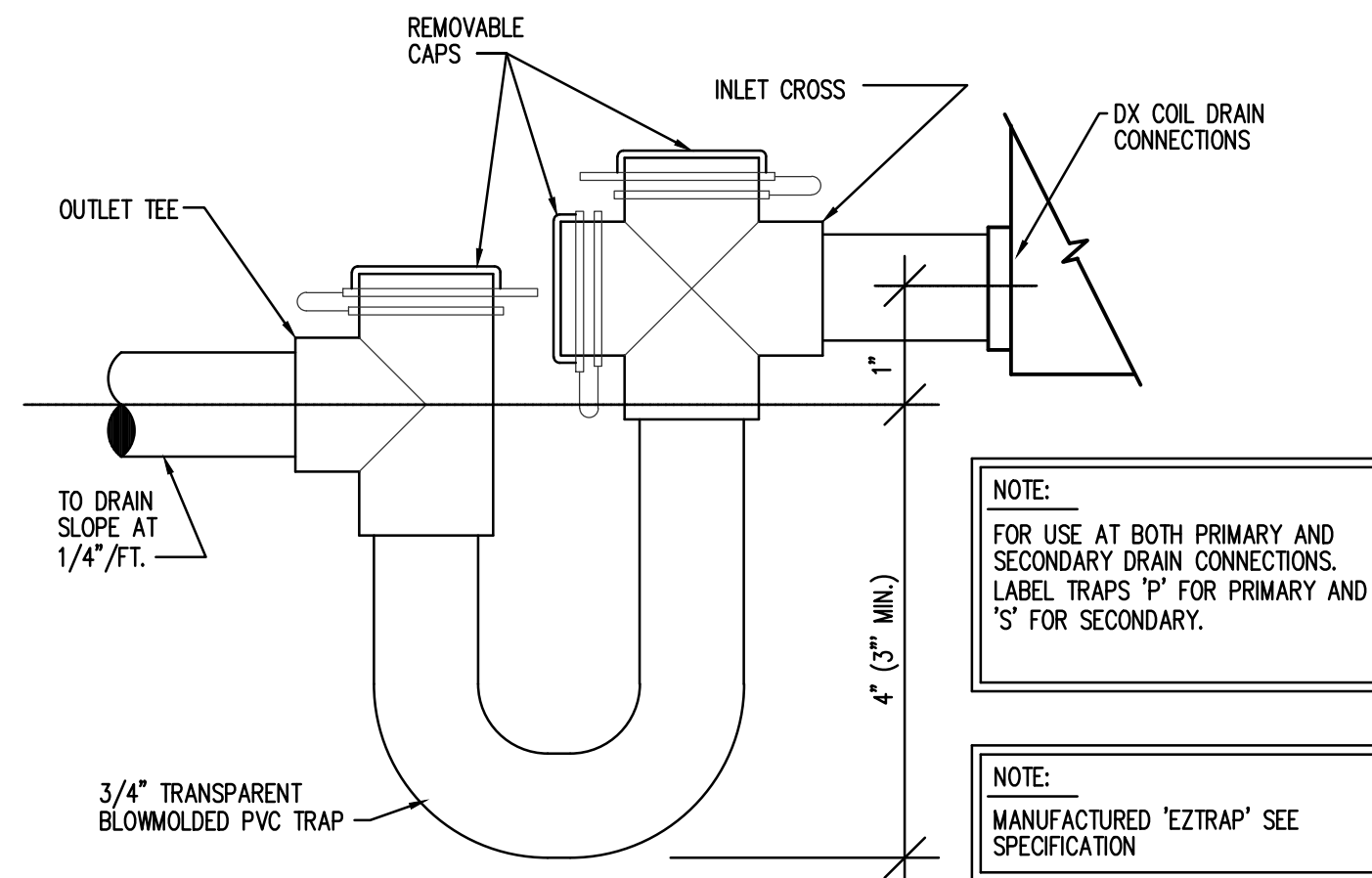
(G) VENTING PENETRATION DETAILS
SCALE: NONE



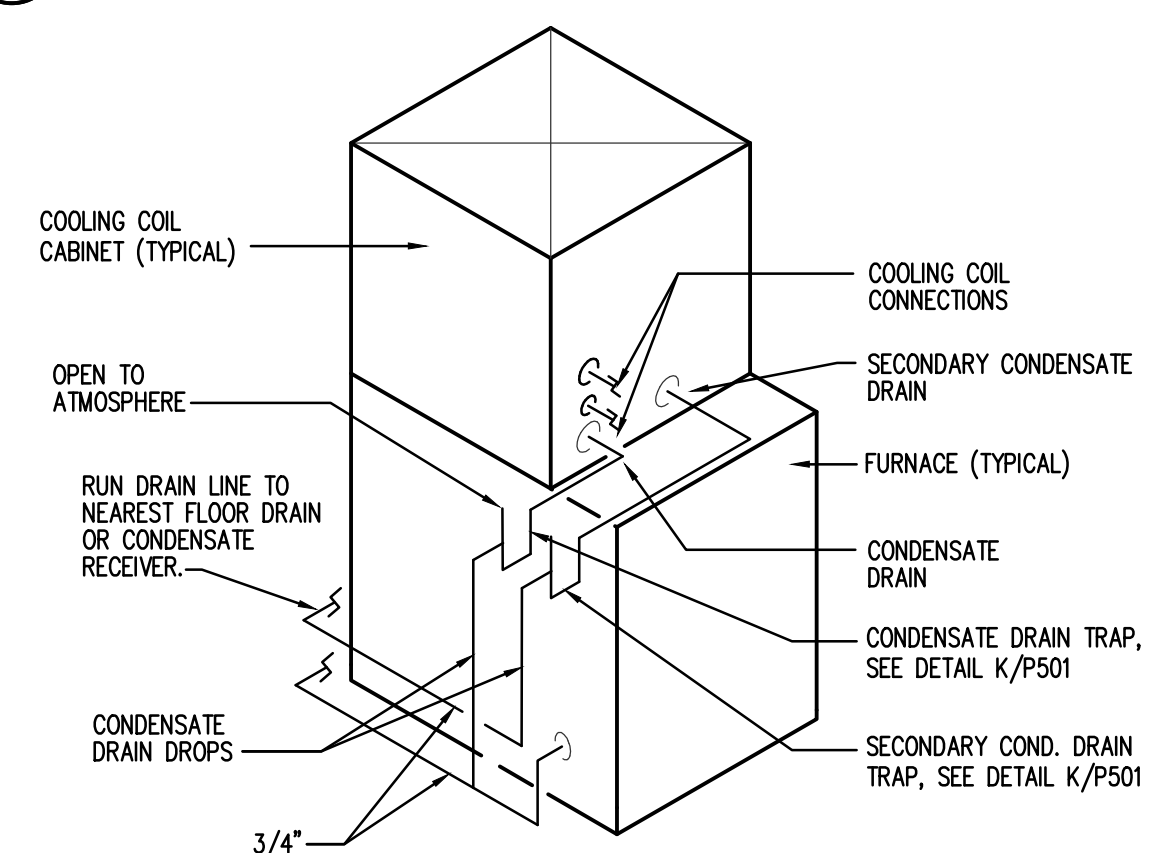
(H) CONDENSATE RECEIVER DETAIL
SCALE: NONE



(J) GAS LINE CONNECTION DETAIL
SCALE: NONE



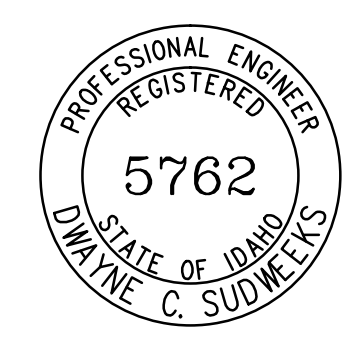
(K) DX COIL CONDENSATE DRAIN DETAIL
SCALE: NONE



(L) VERTICAL FURNACE DETAIL
SCALE: NONE

NOTE:
DO NOT RUN CONDENSATE DRAIN IN FRONT OF FURNACE AND FILTERS. THIS WILL ALLOW ACCESS TO FURNACE COMPONENTS AND FILTERS.

ORIGINAL DRAWING SIGNED BY: DWAYNE C. SUDNEEKS
DATE ORIGINAL SIGNED: May 23, 2017
ORIGINAL ON FILE AT ENGINEERED SYSTEMS ASSOCIATES
1355 EAST CENTER, POCAHELLO, IDAHO 83201



Engineered Systems Associates
1355 EAST CENTER
POCAHELLO, IDAHO 83201
PHONE: (208) 233-0501
FAX: (208) 233-0529
EMAIL: esa@engsystems.com
ESA JOB NUMBER: 17031

Architect / Engineer:
GENE C. ULMER
ARCHITECT
1506 S. SECRETARIAT WAY
Nampa, ID 83686
(208) 899-0874 • gculmerarch@aol.com

Date: May 23, 2017
Stamp:

Project for:
Middleton Heritage 09T SC
Middleton Idaho Stake
1332 Cornell Street
Middleton, Idaho 83644

Project for:
THE CHURCH OF JESUS CHRIST OF LATTER-DAY SAINTS

Mark	Date	Rev.	Description

Project Number: 21701
Plan Series: HET-SCS-09-07
Property Number: 50034331601

Sheet Title:
PLUMBING DETAILS

Sheet:
P501